

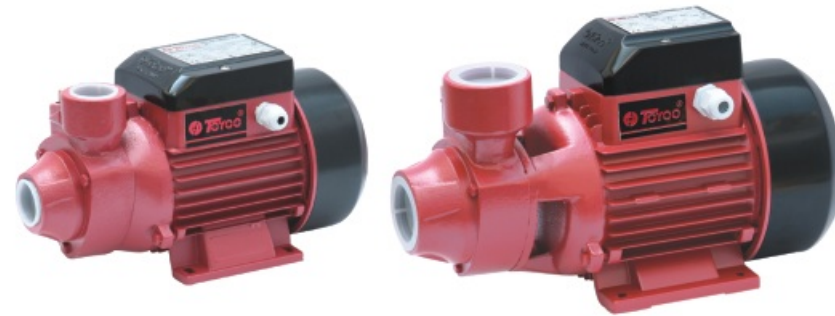
## PERFORMANCE RANGE

- Flow rate up to 50 l/min(3.0m<sup>3</sup>/h)

- Head up to 70m

## OPERATING LIMITS

- Suction lift up to 8 m
- Fluid temperature up to 40°C
- Maximum ambient temperature 40°C



**TKM60-1**

**TKM60**

## PUMPS INSTALLATION AND APPLICATIONS

These pumps are suitable for handling clean water which are not chemically aggressive to the pump components. Reliable, economical and simple to use, they are suitable for domestic applications and the automatic distribution of water from storage tanks, watering gardens and for boosting insufficient mains water pressure..These pumps should be installed in a covered area, protected against the weather.

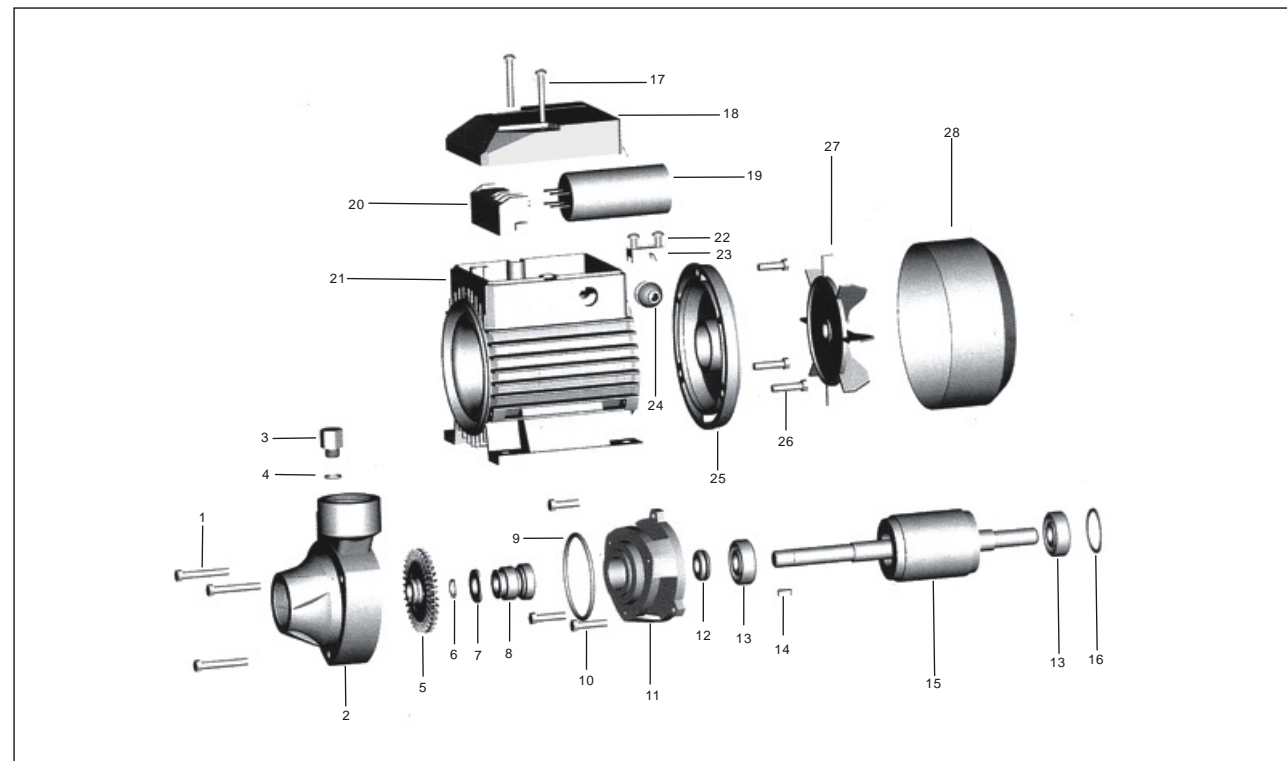
## PERFORMANCE

- High heads with respect to power requirements.
- Stable operating curves, with small variations in delivery rate with respect to large variations in the pressure demand.
- High tolerance of the presence of entrained air in the liquid being pumped

## STRUCTURAL CHARACTERISTICS

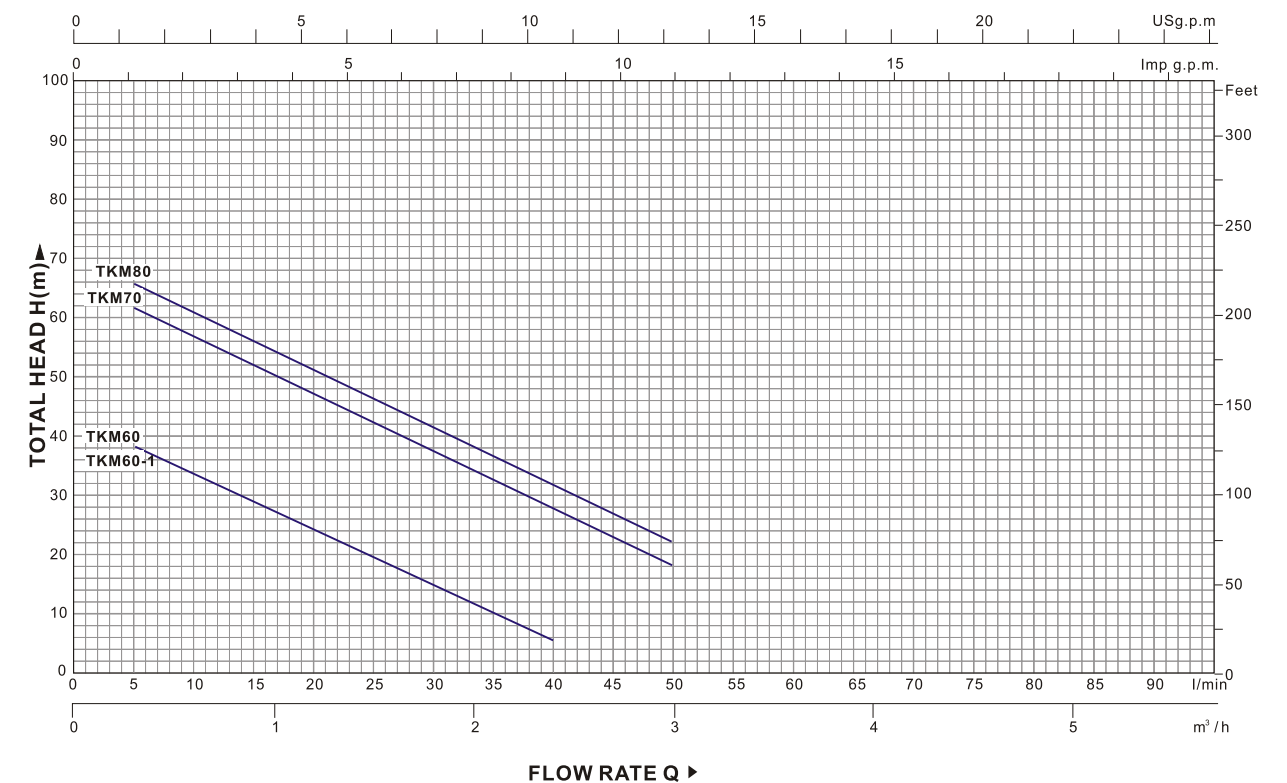
- cast iron pump body
- stainless steel mechanical seal(graphite to ceramic)
- brass impeller with radial peripheral blades
- protection Ip44
- anti-rust shaft (Hi-Cr plated 45#steel shaft)
- with thermal overload protector in single phase motor
- C&U bearing or local bearing

**WARRANTY: 1 YEAR**(according to our general sales conditions)



N.	DESCRIPTION	N.	DESCRIPTION	N.	DESCRIPTION
1	Bolt	13	Bearing	25	Driving cap
2	Pump casing	14	Key	26	Bolt
3	Charge plug	15	Rotor	27	Fan
4	"O" ring	16	"O" ring	28	Fan cover
5	Impeller	17	Bolt		
6	Snap ring	18	Terminal cover		
7	Washer	19	Capacitor		
8	Mechanical	20	Terminal board		
9	"O" ring	21	Casing with wound stator		
10	Bolt	22	Screw		
11	Pump support	23	Cable presser		
12	Drops guard	24	Fairlead		

PERFORMANCE CHART AT n=2900 l/min



MODEL	INLET/OUTLET	POWER	Q	0	0.3	0.6	0.9	1.2	1.5	1.8	2.1	2.4	3.0	
Single phase	Inch	KW	HP	l/min	0	5	10	15	20	25	30	35	40	50
TKM 60	1"×1"	0.37	0.50	H	40	38	33.5	29	24	19.5	15	10	5	
TKM 60-1	1"×1"	0.37	0.50		40	38	33.5	29	24	19.5	15	10	5	
TKM 70	1"×1"	0.60	0.80		65	62	57	52	47	42	37	32	27	18
TKM 80	1.5"×1.5"	0.75	1		70	66	61	56	51	46	41	36	31	22

H=TOTAL HEAD IN METERS. Q=FLOW RATE